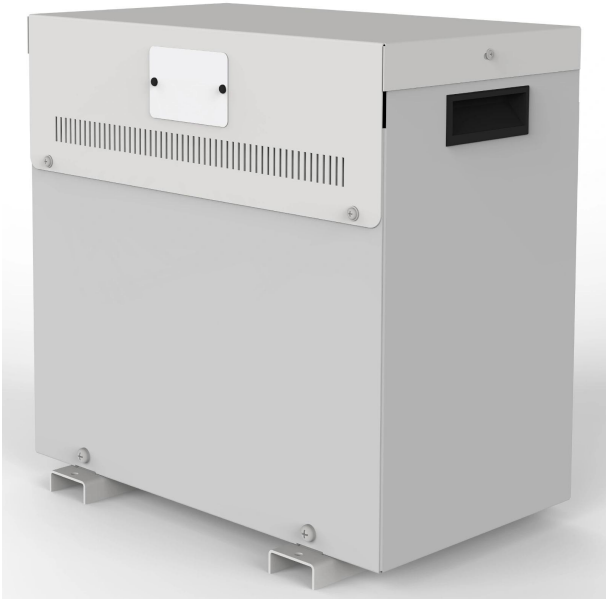


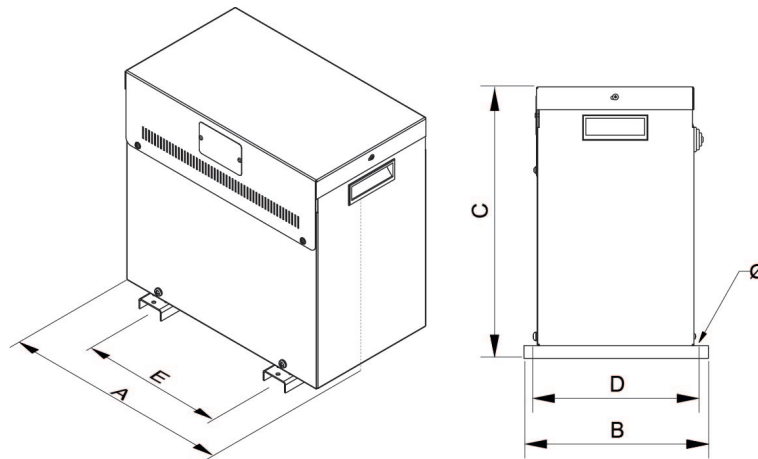
Three-phase dry type reversible autotransformers, finished in anti-flash varnished in IP23 metal enclosure with protection to prevent direct contact with electrical parts.



## Technical characteristics

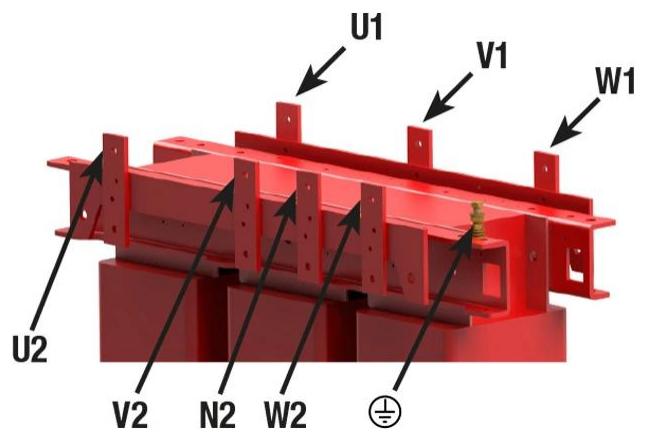
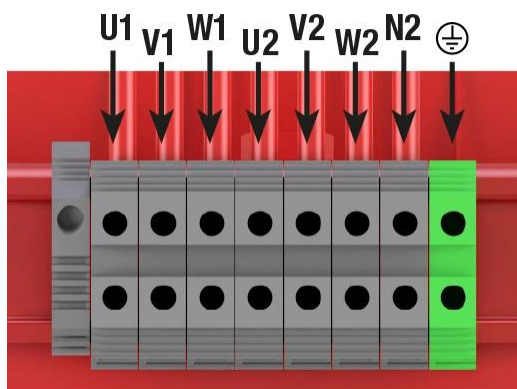
|                     |  |
|---------------------|--|
| Rating              | 16 kVA   |
| Input voltage       | 400 V  |
| Output voltage      | 230 V  |
| Frequency           | 50/60 Hz                                       |
| Connection group    | YN0  |
| Cover               | Metal enclosure RAL 7035 (cat. C3 ISO 12994-2) |
| Protection degree   | IP-23 / IK-08                                  |
| Cooling             | ANAN   |
| Ambient temperature | 45 °C  |
| Temperature rise    | Class F - 155°C                                |
| Insulation          | Class H - 180°C                                |
| Windings            | Class HC - 200 °C                              |
| Test voltage        | 3 kV (1 min, 50 Hz)                            |
| Standards           | IEC/EN/UNE-EN 61558, CE                        |
| Weight              | 51 kg  |

## Dimensions



Dimensions (AxBxCxDxE): 380x260x384x245x250 mm 6Ø

## Electrical connection



Three-phase dry type reversible autotransformers, finished in anti-flash varnished in IP23 metal enclosure with protection to prevent direct contact with electrical parts.

## Features

---

Dry type autotransformer

Anti-flash varnish finish, offering:

- Protection against corrosive environments
- Increase of electrical isolation
- High compression capacity
- Reduction of noise level
- Increase of product's lifespan

Metalic box IP-23 enclosure painted with epoxy polyester resin RAL 7035 (cat. C3 ISO 12994-2)

Safety class I

Includes cable glands, silent-blocks and stainless steel lifting eyebolts from 25 kVA

Possibility of tailor-made manufacturing

## Downloads

---