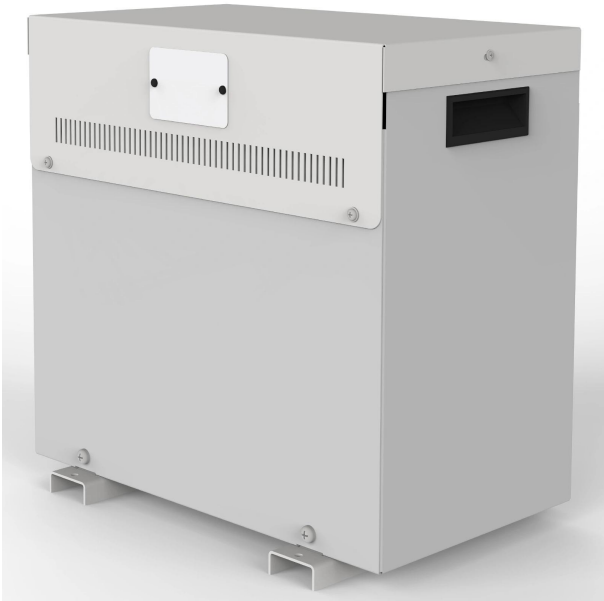


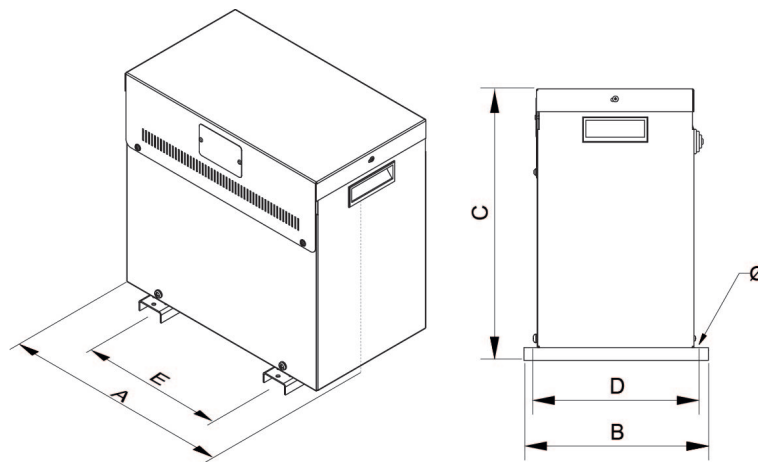
Three-phase dry type reversible autotransformers, finished in anti-flash varnished in IP23 metal enclosure with protection to prevent direct contact with electrical parts.



Technical characteristics

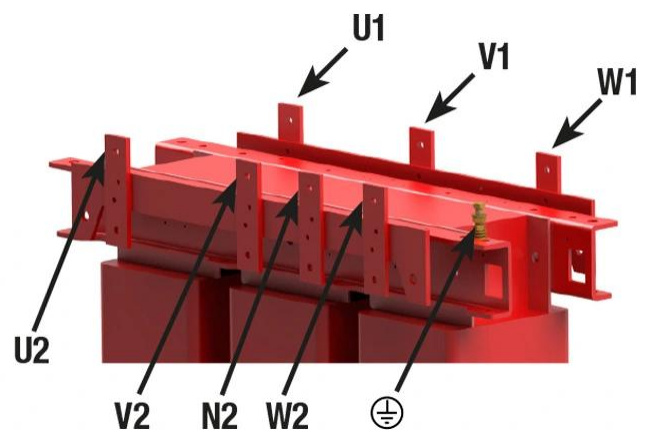
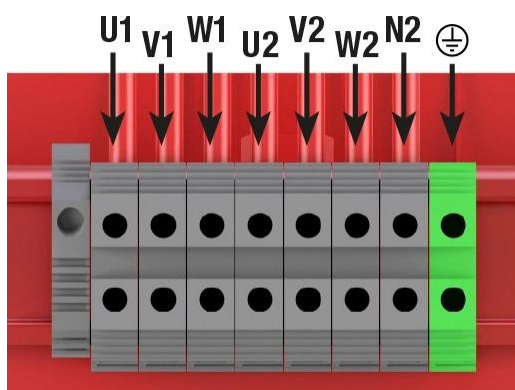
| | |
|---------------------|--|
| Rating | 160 kVA |
| Input voltage | 400 V |
| Output voltage | 230 V |
| Frequency | 50/60 Hz |
| Connection group | YN0 |
| Cover | Metal enclosure RAL 7035 (cat. C3 ISO 12994-2) |
| Protection degree | IP-23 / IK-08 |
| Cooling | ANAN |
| Ambient temperature | 45 °C |
| Temperature rise | Class H - 180°C |
| Insulation | Class H - 180°C |
| Windings | Class HC - 200 °C |
| Test voltage | 3 kV (1 min, 50 Hz) |
| Standards | IEC/EN/UNE-EN 60076, CE |
| Weight | 334 kg |

Dimensions



Dimensions (AxBxCxDxE): 817x560x975x500x415 mm 12∅

Electrical connection



Three-phase dry type reversible autotransformers, finished in anti-flash varnished in IP23 metal enclosure with protection to prevent direct contact with electrical parts.

Features

Dry type autotransformer

Anti-flash varnish finish, offering:

- Protection against corrosive environments
- Increase of electrical isolation
- High compression capacity
- Reduction of noise level
- Increase of product's lifespan

Metalic box IP-23 enclosure painted with epoxy polyester resin RAL 7035 (cat. C3 ISO 12994-2)

Safety class I

Includes cable glands, silent-blocks and stainless steel lifting eyebolts from 25 kVA

Possibility of tailor-made manufacturing

Downloads
