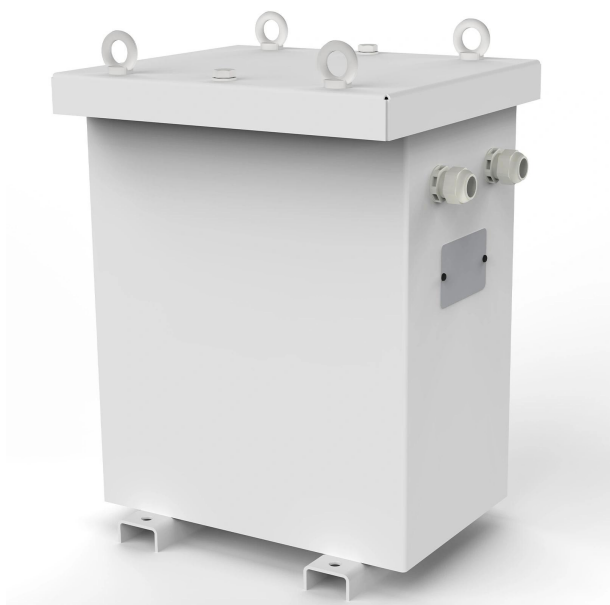


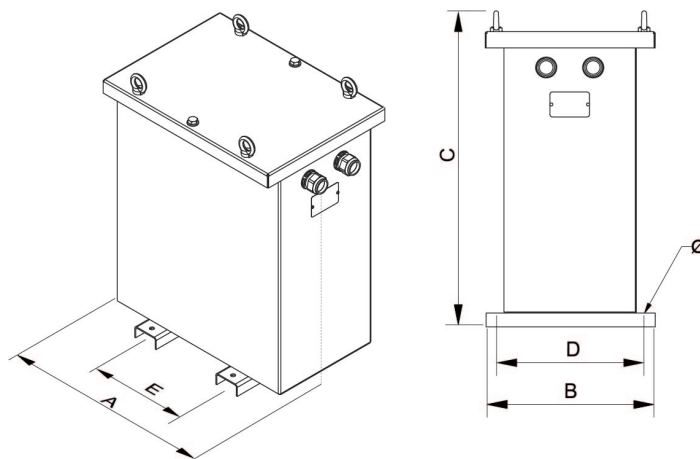
Three-phase dry type ecological isolation transformers with high performance finished in anti-flash varnished in IP54/65 metal enclosure with protection for outdoor installation.



Technical characteristics

| | |
|---------------------|--|
| Rating | 10 kVA |
| Input voltage | 400 V |
| Output voltage | 400 V |
| Frequency | 50/60 Hz |
| Connection group | Yyn0 |
| Cover | Metal enclosure RAL 7035 (cat. C4 ISO 12994-2) |
| Protection degree | IP-65 / IK-10 |
| Cooling | ANAN |
| Ambient temperature | 45°C |
| Temperature rise | Class F - 155°C |
| Insulation | Class H - 180°C |
| Windings | Class HC - 200 °C |
| Inrush current | < 8In |
| Voltage drop | < 2 % |
| Efficiency (%) | 97,7 |
| Noise level (dB) | < 45 |
| Test voltage | 3 kV (1 min, 50 Hz) |
| Standards | IEC/EN/UNE-EN 61558, CE |
| Weight | 130 kg |

Dimensions



Dimensions (AxBxCxDxE): 694x413x764x370x350 mm 11Ø

Three-phase dry type ecological isolation transformers with high performance finished in anti-flash varnished in IP54/65 metal enclosure with protection for outdoor installation.

Features

Dry type transformer

All transformers are dipped in anti-flash varnish for increased insulation and compactness.

Reduces long-term operating costs.

Low temperature rise.

Longer life than standard transformers.

Prepared for higher ambient temperatures.

Low connection peak.

Lower noise level.

Safety class I.

Includes lifting eyebolts.

Metalic box IP-65 up to 40kVA and IP-54 as from 50kVA (for IP-65 degree consult us) enclosure painted with Polyester resin RAL 7035 (cat. C4 ISO 12994-2).

Possibility of tailor-made manufacturing.

Applications

- Circuit isolation, with the possibility of increasing or reducing the voltage.
- Reducing voltage drops in installations with long cable lengths. With the installation of a step-up transformer and a step-down transformer.
- In installations with a certain level of electrical noise, the TTG series helps to improve the electrical network quality in secondary.
- Changing the neutral system of an installation
- In installations where energy savings is critical, or where a lower connection peak is required such as renewable energy plants or high energy efficiency installations.

Available accessories

- Protections in primary and secondary.
- One, two and up to 3 electrostatic screens.
- Class II
- Wheels.
- PT100, PTC or Bimetallic probes.
- Painting C5.
- Different RAL.
- Temperature control unit
- Anti condensation system
- Different IP up to IP-65

CE certificate

- **Ecotransformer**