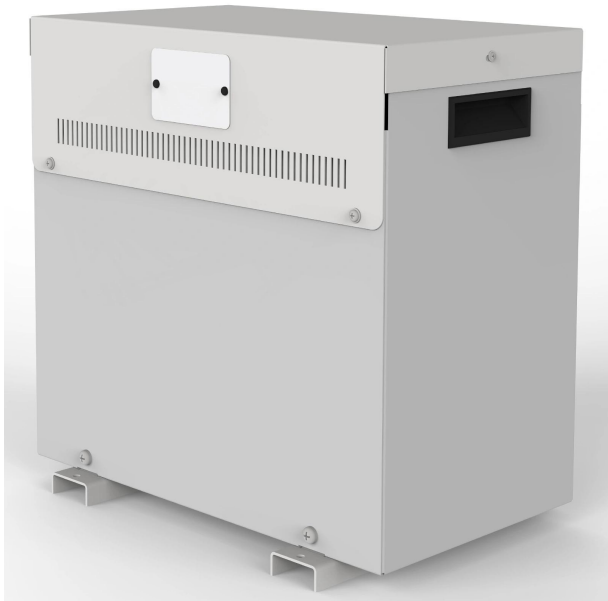


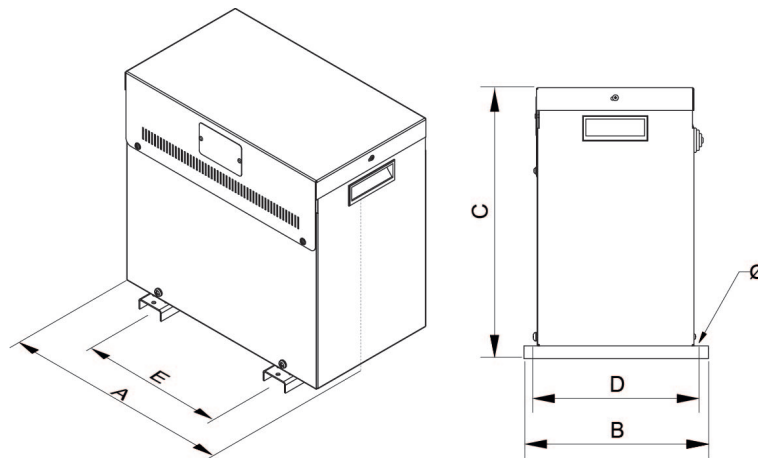
Three-phase dry type step-up isolation transformers finished in anti-flash varnished in IP23 metal enclosure with protection to prevent direct contact with electrical parts.



Technical characteristics

| | |
|---------------------|--|
| Rating | 5 kVA |
| Input voltage | 230 V |
| Output voltage | 400 V |
| Frequency | 50/60 Hz |
| Connection group | Dyn11 |
| Cover | Metal enclosure RAL 7035 (cat. C3 ISO 12994-2) |
| Protection degree | IP-23 / IK-08 |
| Cooling | ANAN |
| Ambient temperature | 45 °C |
| Temperature rise | Class F - 155°C |
| Insulation | Class H - 180°C |
| Windings | Class HC - 200 °C |
| Efficiency (%) | 95,7 |
| Noise level (dB) | < 45 |
| Test voltage | 3 kV (1 min, 50 Hz) |
| Standards | IEC/EN/UNE-EN 61558, CE |
| Weight | 45,2 kg |

Dimensions



Dimensions (AxBxCxDxE): 385x260x384x245x250 mm 6∅

Three-phase dry type step-up isolation transformers finished in anti-flash varnished in IP23 metal enclosure with protection to prevent direct contact with electrical parts.

Features

Dry type transformer

Anti-flash varnish finish, offering:

- Protection against corrosive environments
- Increase of electrical isolation
- High compression capacity
- Reduction of noise level
- Increase of product's lifespan

Metalic box IP-23 enclosure painted with Polyester resin RAL 7035 (cat. C3 ISO 12994-2)

Safety class I

Includes lifting eyebolts from >6,3 kVA

Possibility of tailor-made manufacturing

Applications

- TTU transformers are mainly used to isolate circuits, by raising the voltage from 230V to 400V.
- TTU transformers can be used to increase voltage from 230V to 400V
- In installations with a certain level of electrical noise, the TTU series improves the quality of the secondary electrical network.

Available accessories

- Protections in primary and secondary.
- One, two and up to 3 electrostatic screens.
- Class II
- Wheels.
- PT100, PTC or Bimetallic probes.
- Painting C5.
- Different RAL.
- Temperature control unit
- Anti condensation system
- Different IP up to IP-65

CE certificate

- [CE certificate.](#)