

FILE: E532753

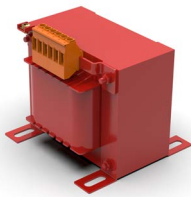
USA Standard: UL 5085-1 / UL 5085-2 (XORU2)
 Canada Standard: CAN/CSA C22.2 No 66.1-06, CAN/CSA C22.2 No 66.2-06 (XORU8)
 CONSTRUCTION ONLY – Component

Potencia	Transformadores / Autotransformadores: 10VA a 1.000kVA Inductancias: 1A a 5.000A	Rating	Transformers / Autotransformers: 10VA to 1.000kVA Reactors: 1A to 5.000A
Tensión	12V a 600V (USA) / 12V a 750V (CAN)	Voltage	12V to 600V (USA) / 12V to 750V (CAN)
Frecuencia	50-60 Hz	Frequency	50-60 Hz
Temperatura ambiente	45 °C	Ambient temperature	45 °C
Clase de aislamiento	B-130 °C / F-155 °C / H-180 °C	Isolation class	B-130 °C / F-155 °C / H-180 °C
Tensión de prueba	1.050V a 4.000V	Test voltage	1.050V to 4.000V
Grado de protección	IP-00 / IP-20	Protection degree	IP-00 / IP-20
Sistema de aislamiento	File E488514 (Polylux-H)	Isolation system	E488514 File (Polylux-H)

Monofásicos | Single-phase

Transformadores: Transformers:

SERIE **PX** | **PX** SERIES



10VA - 5.000VA

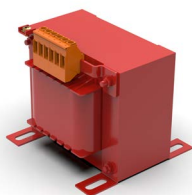
SERIE **TK** | **TK** SERIES



3.15kVA - 400kVA

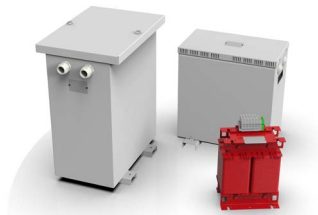
Autotransformadores: Autotransformers:

SERIE **PAUX** | **PAUX** SERIES



10VA - 10.000VA

SERIE **AUK** | **AUK** SERIES



0.1kVA - 1.000kVA

Inductancias: Reactors:

SERIE **RX** | **RX** SERIES



1A - 3.000A

Trifásicos | Three-phase

Transformadores: Transformers:

SERIE **TT** | **TT** SERIES



0.1kVA - 1.000kVA

Autotransformadores: Autotransformers:

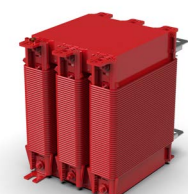
SERIE **AUT** | **AUT** SERIES



1kVA - 1.000kVA

Inductancias: Reactors:

SERIE **RTLX** | **RTLX** SERIES



1A - 5.000A