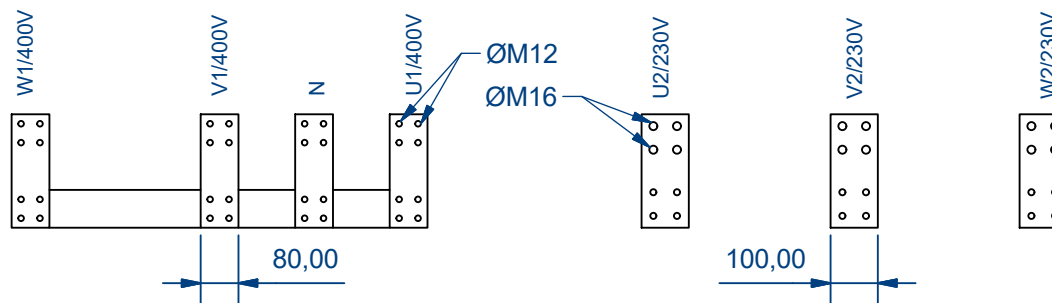
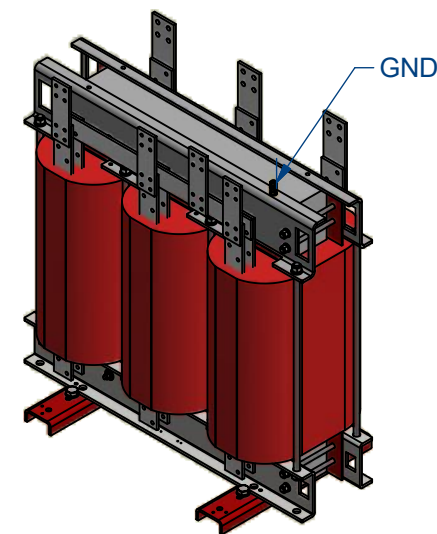
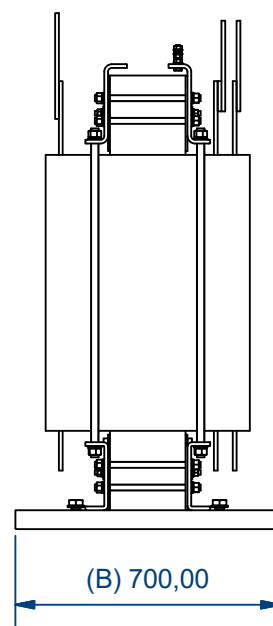
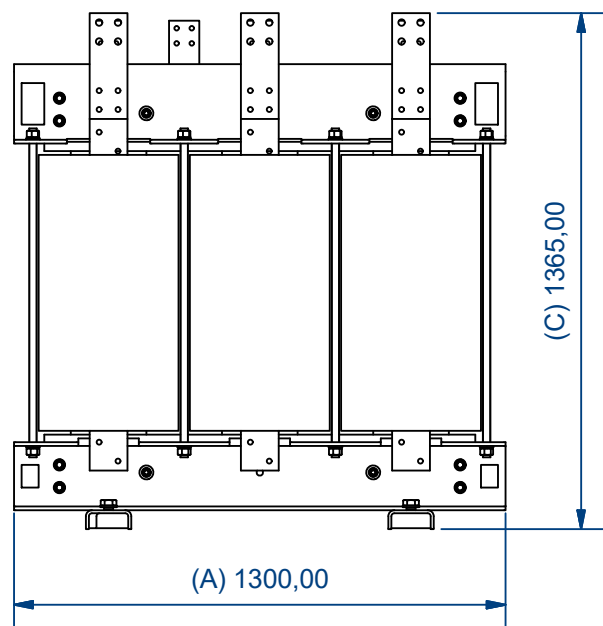


Primary Connection

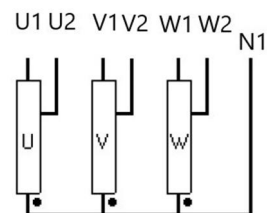
Secondary Connection



(1 : 25)



**YNO**



Characteristics

IP	Vector Group	Rated power	Voltage Pri.	In Pri.	Pri. Connection	Voltage Sec.	In Sec.	Sec. Connection	Ground connection
00	YN0	1000 kVA	400 V	1443,4 A	80X10 mm Al Plate Ø M12	230 V	2510,2 A	100X10 mm Al Plate Ø M16	M12 Brass stud

Drawn by: OPS-21/12/2023	Modified by: -	Approved by: AMR-21/12/2023	Replaces:	Material: Generic	Surface treatment: N/D	Weight: N/D	Valid:
-----------------------------	-------------------	--------------------------------	-----------	----------------------	---------------------------	----------------	--------



Description: AUTX1000 Drawing

Units: mm	Directory:
--------------	------------

Drawing reference: PE.C.NOR.AUTX1000.V01	ERP reference: AUTX1000	Distributed to:	Technical D. Commercial D.	Customers	Scale: 1 : 20	Page: 1 / 1
---	----------------------------	-----------------	-------------------------------	-----------	------------------	----------------