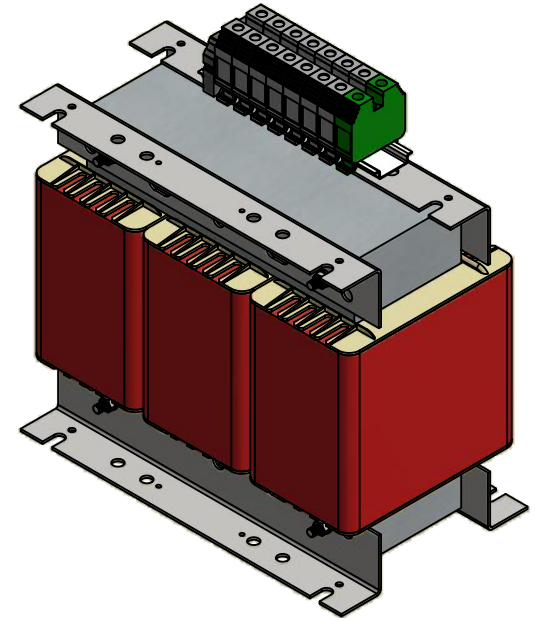
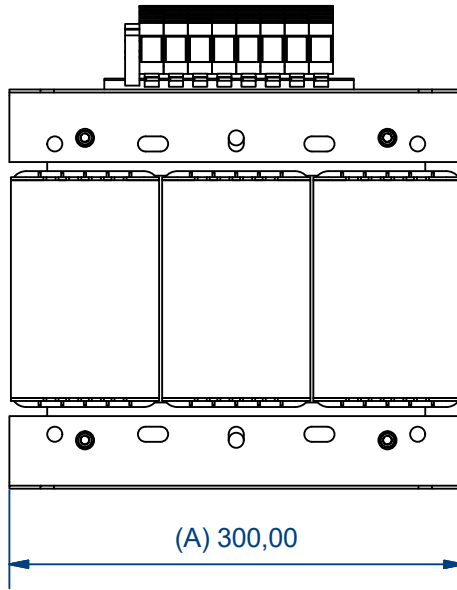
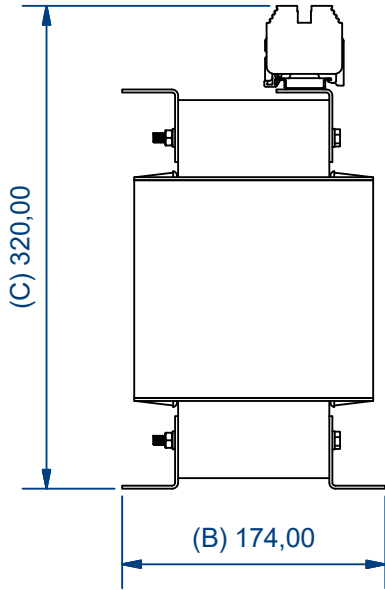
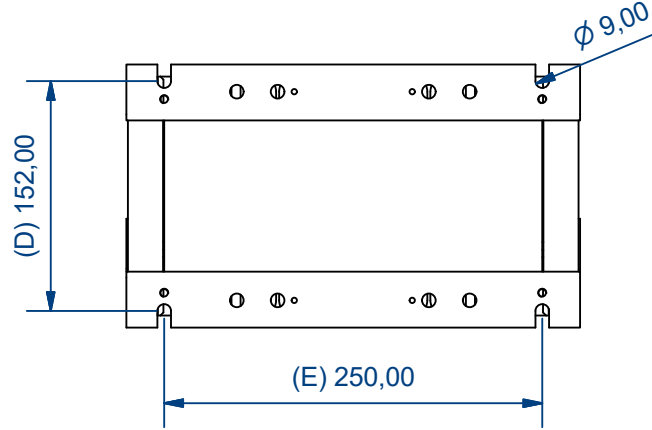
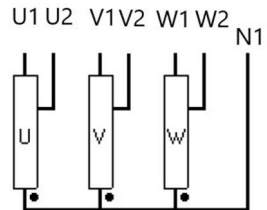


Connection (1/2)



YN0



Characteristics							
IP	Vector Group	I _{max} Pri.	Pri. Connection	I _{max} Sec.	Sec. Connection	Ground connection	
00	YN0	23,09 A	Terminal wire up to 35 mm ²	40,17 A	Terminal wire up to 35 mm ²	Terminal wire up to 35 mm ²	
Drawn by: IVV-25/10/2023	Modified by: -	Approved by: AMR-24/10/2023	Replaces: PE.C.NOR.AUTX16.V01	Material: Generic	Surface treatment: RAL 7035	Weight: N/D	Valid:
POLYLUX			Description: AUTX16 Drawing			Units: mm	Directory:
			Drawing reference: PE.C.NOR.AUTX16.V02		ERP reference: AUTX 16		Distributed to: Technical D. Commercial